

# Quick Start Guide

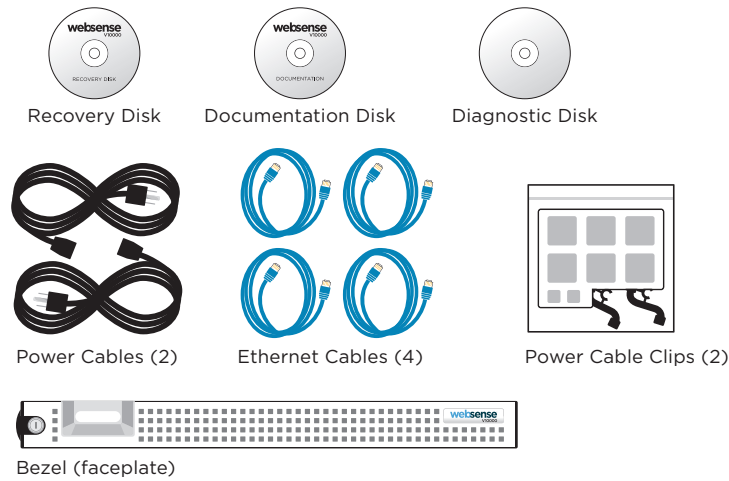
## Websense V10000

### ⚠ Before you begin...

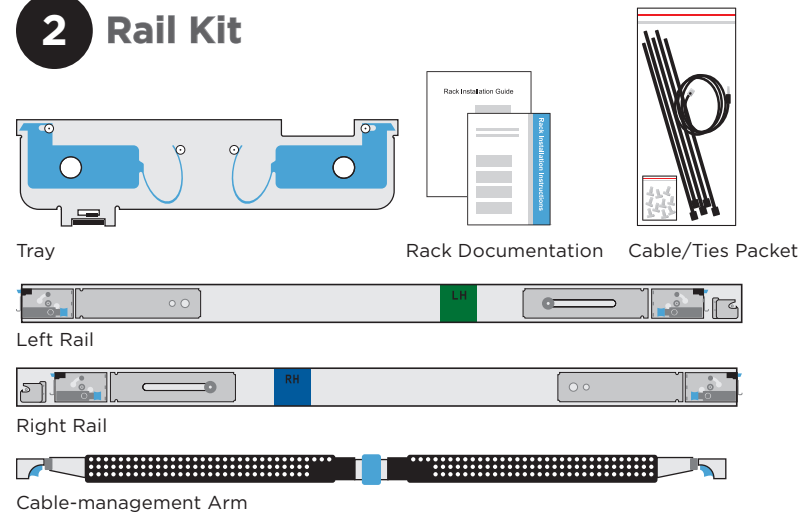
Plan your deployment before setting up the V10000. See the back of this guide for a deployment overview.

## 1 Verify Contents

### 1 Accessory Kit



### 2 Rail Kit

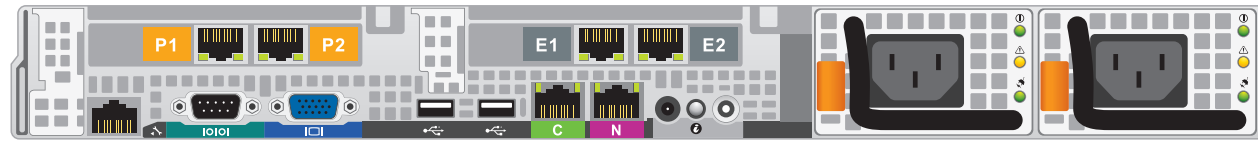


Contact Websense Technical Support if any items are missing.

## 2 Rack Installation



## 3 Connect Network Cables

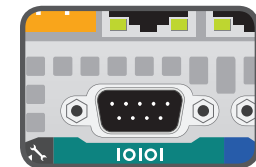


Port	Connects to	Function
C	Any port on switch or router	Provides communication for Websense Web Security modules and handles database downloads from the Internet.
P1	Any port on switch	Enables Websense Content Gateway (proxy) to receive Internet requests and communicate with Web servers.
P2	Any port on switch	Enables Websense Content Gateway (proxy) to receive Internet requests and communicate with Web servers.
N	Span, monitor, or mirror port on switch	Allows Network Agent to monitor all Internet requests.
E1 E2	N/A	Reserved for future expansion.

Cat 5E cables (or better) are required. Do not use crossover network cables.

## 4 Connect Input Device

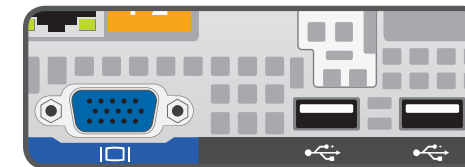
### Serial Port Connection



Connect a terminal or terminal server to the serial port.

OR

### Keyboard/Monitor Connection



Connect a monitor, keyboard, and mouse to the V10000, either directly or through a KVM (keyboard/video/mouse) switch.

## 5 Connect Power

1. Plug each power supply into an appropriate power source.
2. Press power button on front of V10000.
3. Check these indicators:



#### Front

- Power button is illuminated.
- Hard drive LEDs are green.

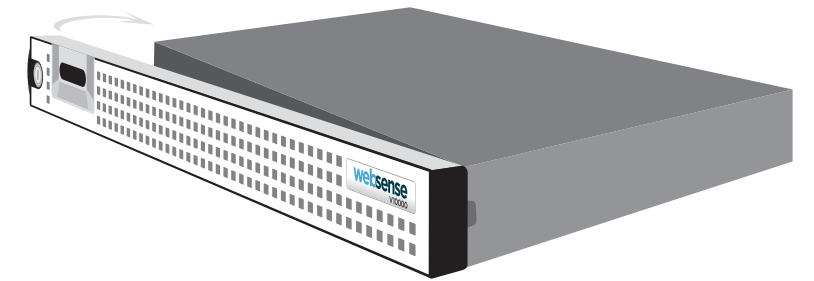
#### Rear

- Top and bottom LEDs for each power supply are green.
- NIC LEDs are green.
- System status indicator (LED left of power supplies) is solid blue.



Contact Websense Technical Support if any indicators are not illuminated correctly.

## 6 Install Bezel (optional)



1. Insert right tab into slot on V10000.
2. Press left tab in firmly until bezel snaps into place.
3. V10000 can be locked using keys included with bezel. (optional)

## 7 Configuration Overview

1. **V10000 Command Line:** Configure V10000 Controller interface (C) via firstboot script.
2. **V10000 Console:** Log on via browser to configure remaining network interfaces.
3. **Windows Server 2003:** Install Websense Manager, Log Server, and optional components.
4. **Websense Manager:** Log on via browser to enter subscription key, update Master URL Database, configure Network Agent, and customize policies.
5. **Websense Content Manager:** Log on to the proxy via browser to enter subscription key and download proxy databases.

See the **V10000 Getting Started** guide online for detailed instructions.

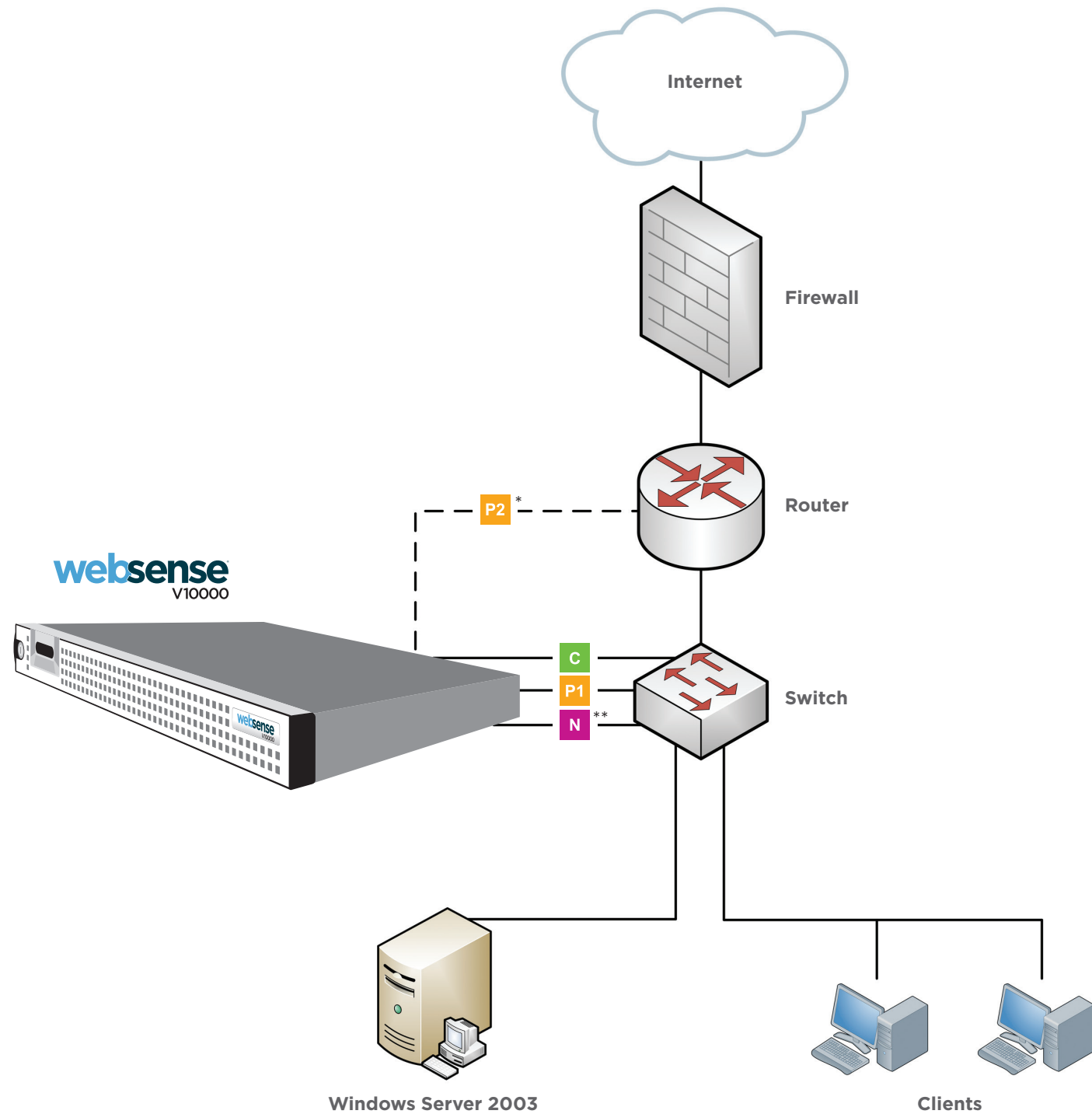
## Support & Resources

**V10000 Getting Started Guide**  
[www.websense.com/V10000/gsg/](http://www.websense.com/V10000/gsg/)  
 Also available on the Documentation disk.

**Online Support and Contact Information**  
[www.websense.com/support/](http://www.websense.com/support/)

## V10000 Deployment Overview

You can deploy one or more V10000 appliances on your network. The diagram below illustrates a basic V10000 deployment. A separate computer with Windows Server 2003 is required for running Websense Manager, Log Server and Microsoft SQL Server. See the **V10000 Getting Started** guide for details.



\* P2 is optional and may be connected to the router or the switch. See the **V10000 Getting Started** guide for details.

\*\* Connect the N interface to a span, monitor, or mirror port on the switch.

## Network Configuration Reference Sheet

### V10000 Configuration

Hostname:

#### V10000 Controller Interface (C)

IP Address:

Primary DNS:

Subnet Mask:

Secondary DNS:

Default Gateway:

Tertiary DNS:

#### Websense Content Gateway Interfaces (P1 & P2)

##### P1

IP Address:

Default Gateway:

Subnet Mask:

Primary DNS:

##### P2

IP Address:

Secondary DNS:

Subnet Mask:

Tertiary DNS:

*Above settings apply to P1 and P2*

#### Network Agent Interface (N)

IP Address:

Primary DNS:

Subnet Mask:

Secondary DNS:

Default Gateway:

Tertiary DNS:

#### V10000 Console Access

URL:

<https://<C interface IP address>:9447/>

User Name (default): admin

### Websense Manager

URL:

<https://<Manager IP address>:9443/mng>

Policy Server IP:

User Name (default): **WebsenseAdministrator** Password (default): **admin**

Subscription Key:

*Also used for Websense Content Manager*

SQL Server IP:

### Websense Content Manager

URL:

<https://<C interface IP address>:8081>

User Name (default): **admin** Password (default): **admin**